

RACING STRONG ENGINEERING

3430 ROLLING ROAD – SCOTTSVILLE – VIRGINIA – 24590 – 434.963.9795
WWW.RACINGSTRONG.COM

Thank you for purchasing the RSe Short Shifter Spacer. This spacer is used to drop the shift lever lower to help keep the shift cables from rubbing through the shift boot and to keep the cables from catching or rubbing on the plastic armrest surround.

Tools required:

Philips Screw Driver

3/8" Socket Set

Toyota Service Manual otherwise known as the Big Green Book (BGB)
Or the Haynes Service Manual.

Note:

You may need to move the seats forward and backwards to remove some of the screws on the center console. It may be easier to remove both seats. This will give full access to all of the screws that need to be removed, and will keep you from damaging your seats and the center console.

Figure 1 shows the breakdown of the center console of the 1987-1989 models. The 1984-1986 is very similar.

Remove the shift knob by unscrewing it from the shifter. It unscrews counter-clockwise.

Remove the rear console storage box if so equipped. This is held in place by two screws inside the top compartment and two screws on the side of the box.

Remove the screws holding the center console to the tunnel. Once all of the screws are removed, carefully lift the center console up and out. Be careful not to rip the shift boot. Set this in a safe place.

Remove the spring clips holding the cables to the shifter bracket (Fig 2 90468-14016) Remove the spring clip and 12mm nut holding the cables to the shift tabs and remove the cables and carefully set them off to the side. (Fig 2)

RACING STRONG ENGINEERING

3430 ROLLING ROAD – SCOTTSVILLE – VIRGINIA – 24590 – 434.963.9795
WWW.RACINGSTRONG.COM

Remove the 4 -12mm bolts holding the shifter assembly to the center tunnel.

Remove the 4 -12mm bolts that hold the shift lever in. The holes that these bolts go through are found in Fig 3 – 33502. If you have ordered the RSe kit offered through Twos R Us, replace these bolts during reassembly with those included in the kit.

The spacer fits between Fig 3 – 33502 and 33575. This lowers the shifter in the housing. If needed, you can double up the spacers to get the shifter lower. If you have purchased the RSe kit offered through Twos R Us, run the supplied bolt through the housing and plate and attach with supplied jam nuts. Do not tighten the nuts completely, as the bolt needs to be able to turn in order to attach to the bracket (33575).

Re-assemble the parts in the reverse order. Ensure that the spring clip on top of the shaft is held captive by the plate before re-installing. Please follow the BGB or Haynes Manual for the proper assembly instructions, and make sure that you fully test the installation and shifter for full movement and actuation of the gears before taking the car out for your first test drive.

Used in conjunction with relocating the shifter tab, or with the **Unbalanced Engineering** short shift kit, this will make your shifting more precise and you will have a shorter throw from gear to gear. Please take it easy while you get used to the faster shifts.

You can order the **Unbalanced Engineering short shift kit** from <http://www.twosrus.com/jono.htm>

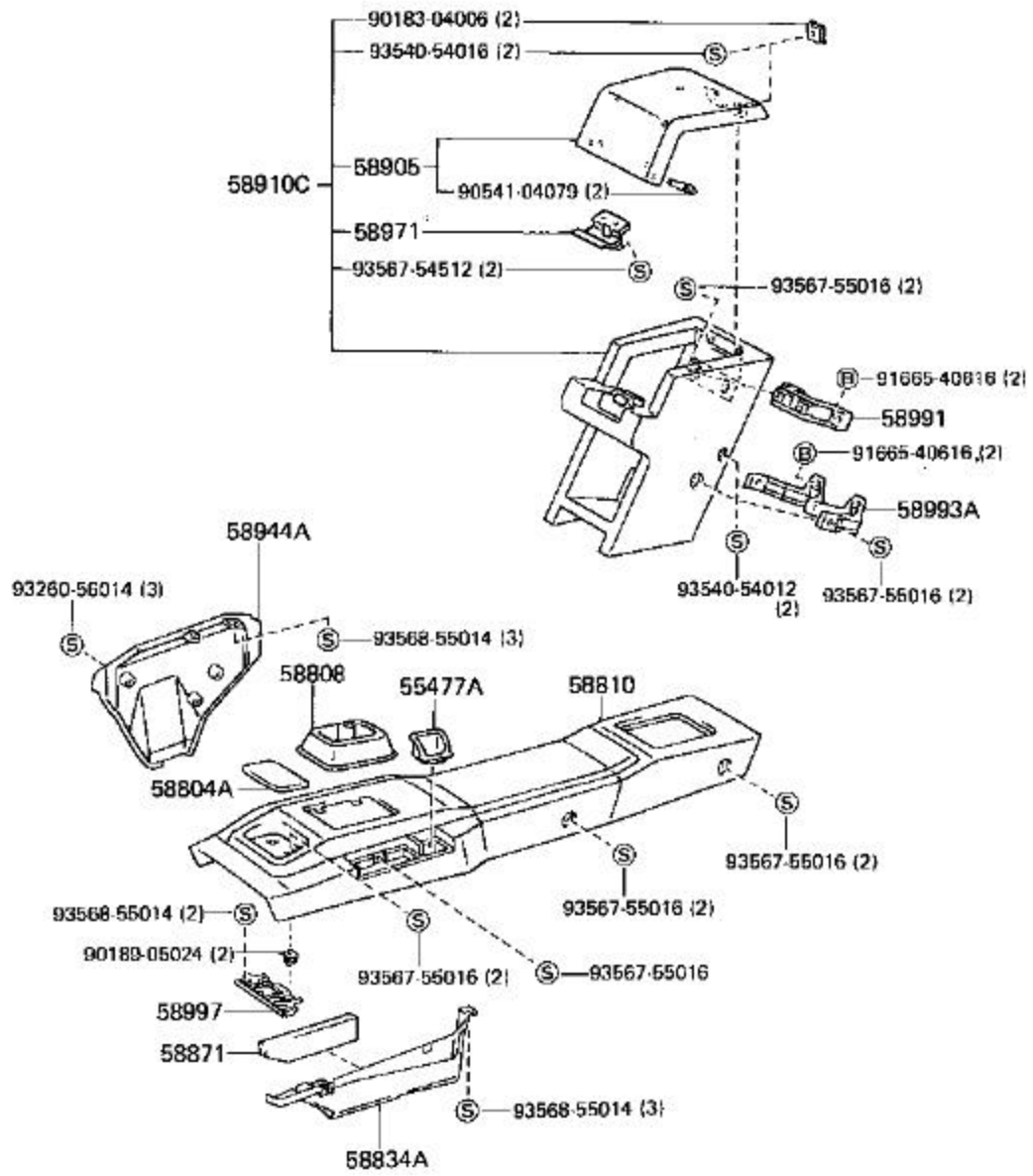


Figure 1

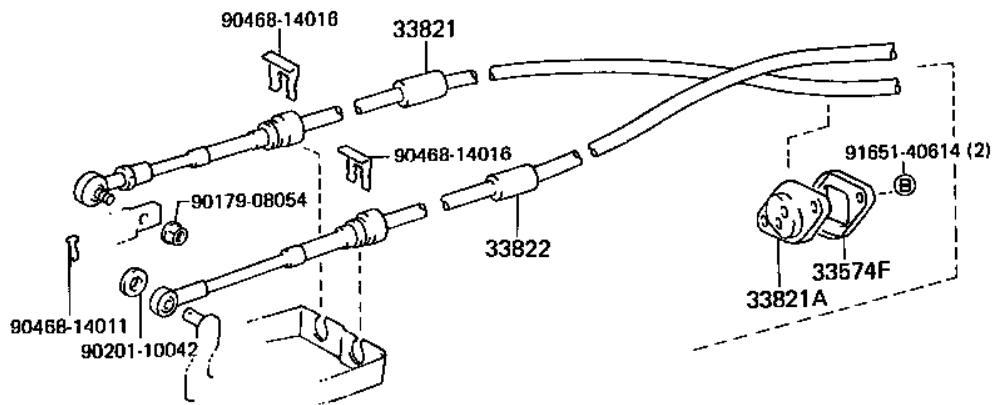


Figure 2

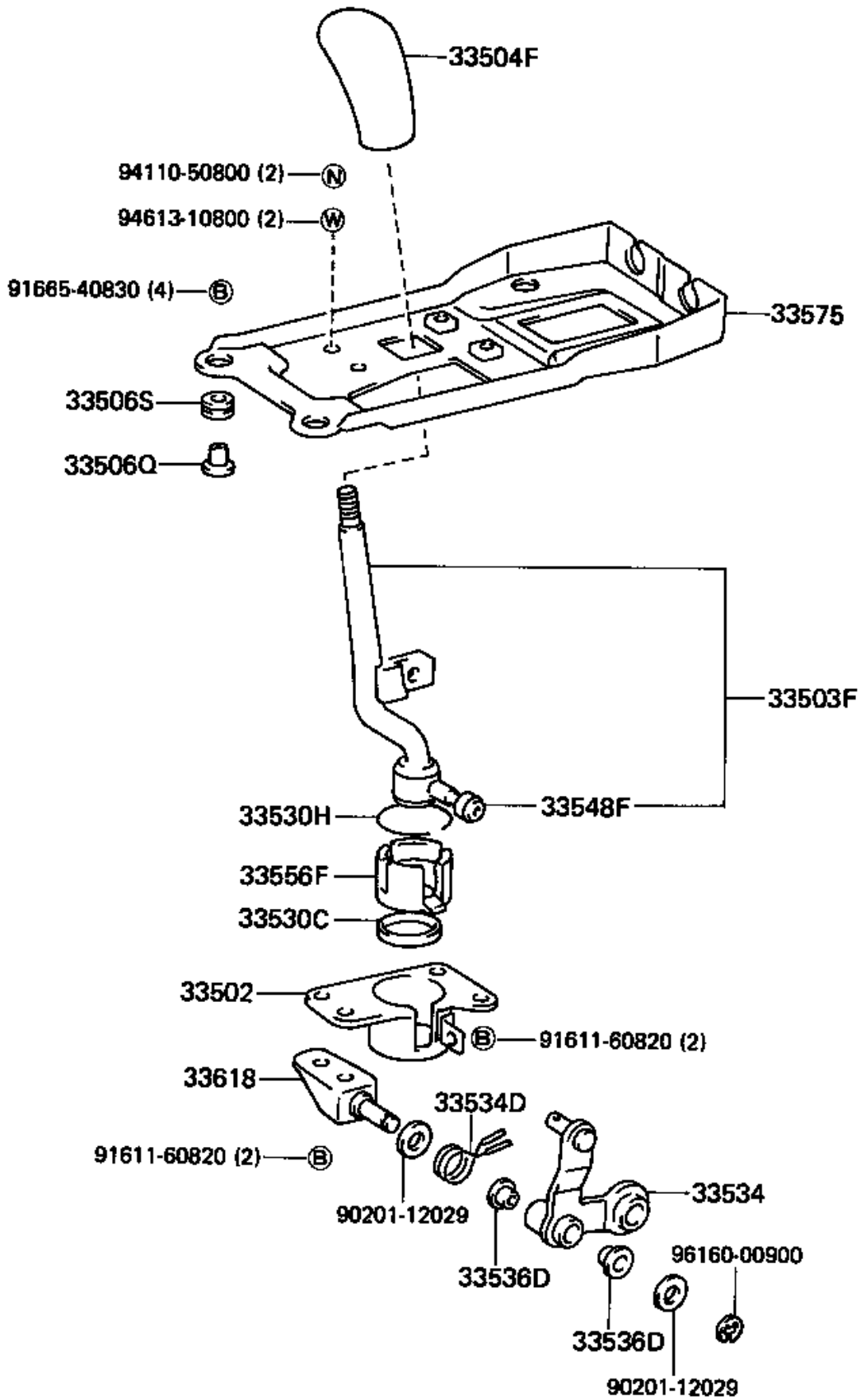


Figure 3